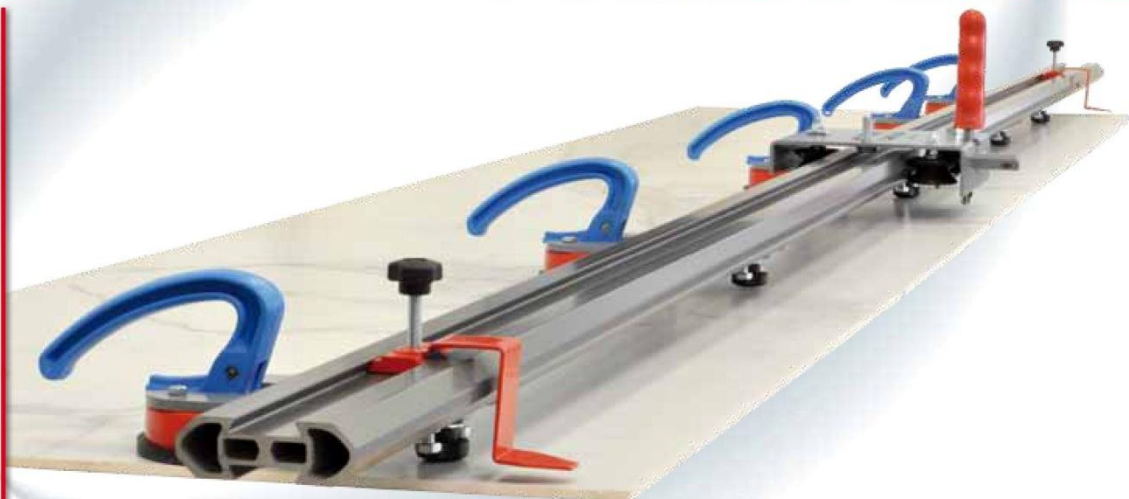




100% MADE IN ITALY

PROGETTO 300

# COMBI LINE



 ISTRUZIONI D'USO

 USAGE INSTRUCTIONS

 NÁVOD K POUŽITÍ

 BEDIENUNGSANLEITUNG



## Art. 300-31

SISTEMA DI INCISIONE GRANDI FORMATI - cm 200

INCISION SYSTEM OF LARGE TILES - cm 200

Ruční rezačka 200 cm včetně přísavek

INZISION SYSTEM DER GROSSE FLIESEN - cm 200



## Art. 300-32

PROLUNGA PER GRANDI FORMATI FINO A 320 cm

EXTENSION FOR LARGE SIZES UP TO 320 cm

Prodloužené rameno na 320 cm

EXTENSION GROSSEN FLIESEN BIS 320 cm



## Art. 300-35

SMERIGLIATRICE ANGOLARE + SUPPORTO

ANGLE GRINDER + SUPPORT

Sada s úhlovou bruskou+kotouč CG115

WINKELSCHLEIFER + SUPPORT

## Art. 300-31



**SISTEMA DI INCISIONE  
GRANDI FORMATI - cm 200**



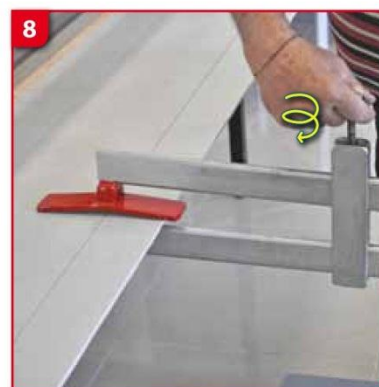
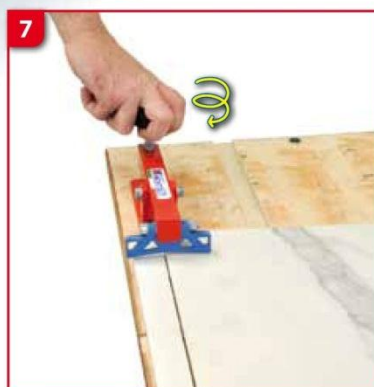
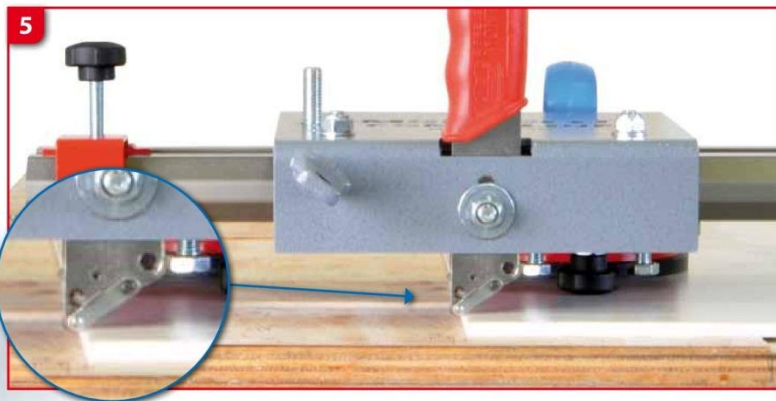
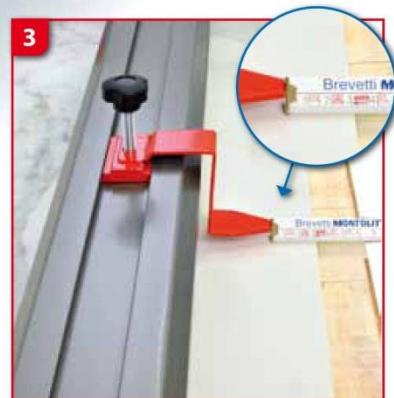
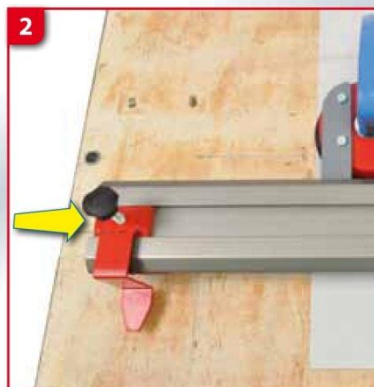
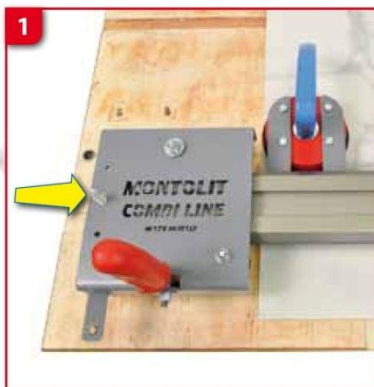
**INCISION SYSTEM  
OF LARGE TILES - cm 200**



**Ruční řezačka 200 cm  
včetně přísavek**




**INZISION SYSTEM  
DER GROSSE FLIESEN - cm 200**



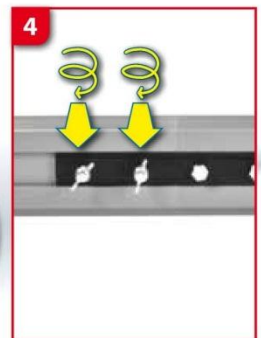
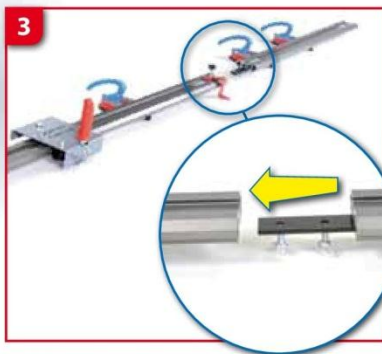
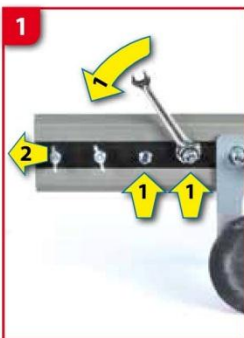
## Art. 300-32

 **PROLUNGA PER GRANDI  
FORMATI FINO A 320 cm**

 **EXTENSION FOR LARGE  
SIZES UP TO 320 cm**

 **Prodloužené rameno  
na 320 cm**

 **EXTENSION GROSSEN  
FLIESEN BIS 320 cm**



## Art. 300-35 (230V~) Art. 300-36 (115V~)

 **SMERIGLIATRICE ANGOLARE  
+ SUPPORTO**

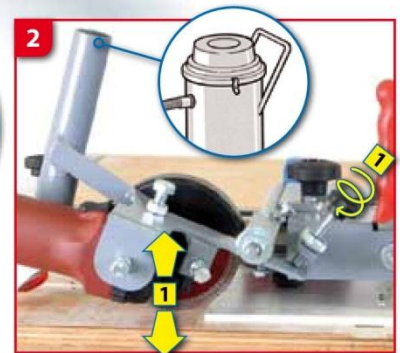
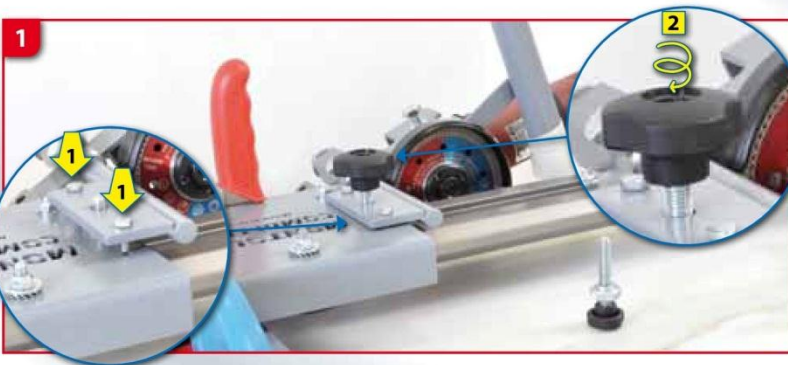
 **ANGLE GRINDER  
+ SUPPORT**

 **Sada s úhlovou bruskou  
+ kotouč CG115**

 **WINKELSCHLEIFER  
+ SUPPORT**

Součástí dodávky je

Art. CG115

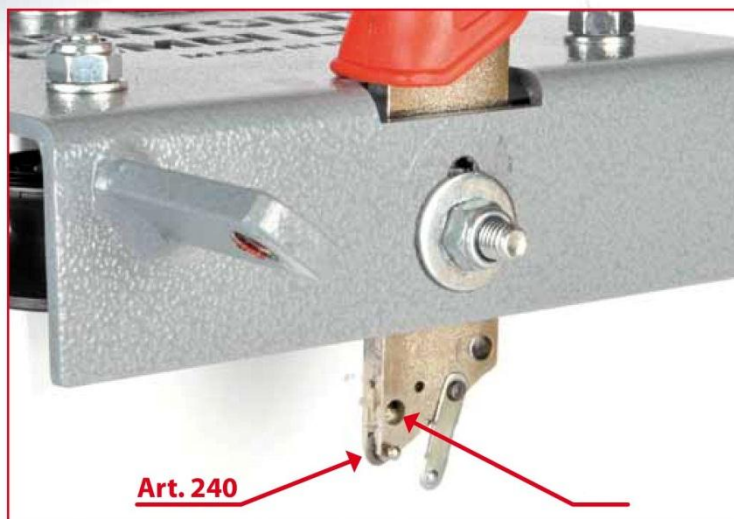


 **PARTI DI RICAMBIO**


 **SPARE PARTS**

 **Náhradní díly**


 **ERSATZTEILE**



 **GARANZIA** - Tutte le attrezzature manuali **MONTOLIT** sono coperte da garanzia a vita (riconosciuta a giudizio esclusivo dell'Ufficio Tecnico della Brevetti **MONTOLIT** S.p.A.) su eventuali difetti di costruzione. Guasti derivanti da un uso non conforme o da normale usura sono esclusi dalla presente garanzia.

 **WARRANTY** - All **MONTOLIT** manual equipment are covered by lifetime warranty (recognisable exclusively by the **MONTOLIT** S.p.A. Patents Technical Office) on any manufacturing defects. Breakages resulting from non-conforming or abnormal use are excluded from cover by this warranty.

 **GARANČE** – veškeré výrobky **MONTOLIT** mají neomezenou záruku na možné výrobní vady (posuzuje technické oddělení firmy Brevetti **MONTOLIT**). Poškození způsobené běžným opotřebením nebo nevhodným použitím není důvodem k reklamaci.

 **GARANTIE** - Alle Ausrüstung **MONTOLIT** sind auf unbeschränkte Dauer gegen eventuelle Konstruktionsfehler garantiert (maßgebend ist diesbezüglich ausschließlich das Urteil des Technischen Büros der Firma Brevetti **MONTOLIT** S.p.A.). Beschädigungen infolge unsachgerechter Verwendung oder normalem Verschleiß werden nicht von dieser Garantie gedeckt.



<http://www.montolit.com/2012/03/Grandi-Formati-Progetto-300>

**Brevetti MONTOLIT**

[info@montolit.cz](mailto:info@montolit.cz) • [www.montolit.cz](http://www.montolit.cz)